

# Beef Meatballs

FPR Recipe # 5965, 5619, 4282, 5807

Item #: 1-17-505-0

**Product Description:** Fully cooked, beef meatballs with seasonings and soy protein added to enhance flavor and value. CN labeled. Commodity processed product.

**Technical Name:** Our Deluxe Beef Meatballs Fully Cooked

**Brand:** ADVANCE

## Product Details

**Data Generated:** 9/9/2020  
**Data Valid As Of:** 4/12/2019  
**Packing Type:** BULK-BAG  
**Pieces Per Case (Approx.):** 960  
**Piece Size (oz.):** 0.50  
**Case Net Weight (lb.):** 30.00

**Case Dimensions:** Width: 13.19  
Length: 20.63  
Height: 11.88  
Case Cube: 1.87

**Cases / Pallet:** 21  
**Case TiHi:** 7 x 3

**Credit (CN):** 2 OZ MMA BEEF  
**Equivalent Grain:** -

### Ingredients:

INGREDIENTS: Ground Beef (Not More Than 20% Fat), Water, Vegetable Protein Product [Soy Protein Concentrate, Zinc Oxide, Niacinamide, Ferrous Sulfate, Copper Gluconate, Vitamin A Palmitate, Calcium Pantothenate, Thiamine Mononitrate (B1), Pyridoxine Hydrochloride (B6), Riboflavin (B2), Cyanocobalamin (B12), (May Contain Caramel Color), (May Contain Soy Lecithin)], Meatball Seasoning [Dextrose, Tomato Powder, Soybean Oil, Disodium Inosinate and Disodium Guanylate, Spice Extractives, Nonfat Dry Milk], Peppers, Dehydrated Minced Onion, Bread Crumbs (Bleached Wheat Flour, Soybean Oil, Dextrose, Leavening {Sodium Acid Pyrophosphate, Sodium Bicarbonate}, Whey, Oleoresin Paprika), Salt, Sodium Phosphate. CONTAINS: Milk, Soy, Wheat

**Shelf Life (days):** 455  
*Starting from date of production when kept @ 0°F or below.*

### Preparation Method:

**Conventional Oven:** Preheat oven to 375 degrees f. Bake frozen product for 11 -13 minutes or until internal temperature reaches 165 degrees f.

**Convection Oven:** Preheat oven to 350 degrees f. Bake frozen product for 8 - 10 minutes or until internal temperature reaches 165 degrees f.

**Microwave:** Cook frozen product on high power for 2 - 4 minutes or until internal temperature reaches 165 degrees f.

**Master Case GTIN:** 00880760017650

**Master Case Gross Weight:** 32.29800

### Nutrition Facts:

**Serving Size:** 2.50 OZ (70 g)  
**Servings Per Container:** 192

**Calories / Calories from Fat:** 150 / 80  
% Daily Value \*\*

Total Fat	9 g	14%
Saturated Fat	3.5 g	18%
Trans Fat	0 g	
Cholesterol	35 mg	12%
Sodium	250 mg	10%
Total Carbohydrate	4 g	1%
Dietary Fiber	1 g	4%
Sugars	1 g	
Protein	14 g	
Vitamin A		2%
Vitamin C		2%
Calcium		4%
Iron		10%

\*\* Percent Daily values are based on a 2,000 calorie diet. Your daily values may be higher or lower depending on your calorie needs.

The data contained on this spec sheet has been approved by Child Nutrition Labeling Technologist, Kimberly Scardicchio.



AdvancePierre Foods • 9990 Princeton-Glendale Rd. • Cincinnati, Ohio 45246 • Phone: 1-800-969-2747 •  
www.advancepierre.com  
Date Generated: 9/9/2020



# Flame Grilled Beef Pattie CN

Item #: 1-155-425-20

**Product Description:** Fully cooked, lightly seasoned beef (80/20). Contains applesauce. Soy added. Sprocket shape with charmarks. Sleeve pack. CN labeled. Commodity processed product.

**Technical Name:** CN Fully Cooked Flamebroiled Beef Patties Made with Applesauce - Caramel Color Added

**Brand:** Advance Pierre

## Product Details

**Data Generated:** 9/9/2020  
**Data Valid As Of:** 4/12/2019  
**Packing Type:** BULK-SLV  
**Pieces Per Case (Approx.):** 200  
**Piece Size (oz.):** 2.50  
**Case Net Weight (lb.):** 31.25

**Case Dimensions:** Width: 13.25  
 Length: 19.88  
 Height: 9.13  
 Case Cube: 1.39

**Cases / Pallet:** 35  
**Case TiHi:** 7 x 5

**Credit (CN):** 2 OZ MMA BEEF  
**Equivalent Grain:** -

### Ingredients:

**INGREDIENTS:** Ground Beef (Not More Than 20% Fat), Water, Vegetable Protein Product [Soy Protein Concentrate, Zinc Oxide, Niacinamide, Ferrous Sulfate, Copper Gluconate, Vitamin A Palmitate, Calcium Pantothenate, Thiamine Mononitrate (B1), Pyridoxine Hydrochloride (B6), Riboflavin (B2), Cyanocobalamin (B12), (May Contain Caramel Color), (May Contain Soy Lecithin)], Unsweetened Applesauce [Apples, Water, (May Contain Erythorbic Acid), (May Contain Ascorbic Acid)], Salt, Sodium Phosphate, Caramel Color. CONTAINS: Soy

**Shelf Life (days):** 455  
*Starting from date of production when kept @ 0°F or below.*

### Preparation Method:

**Conventional Oven:** From frozen state: sleeve pack preparation. Put a few smallholes in top of bag. Place entire bag intact on sheet pan in preheated oven 375-400 degrees f for 60 minutes. Remove from oven and let stand 3 minutes before opening bag. Always cook product to an internal temperature of 165 degrees f.

**Convection Oven:** From frozen state: sleeve pack preparation. Put a few smallholes in top of bag. Place entire bag intact on sheet pan in preheated oven 375 to 400 degrees f for 30-40 minutes. Remove from oven and let stand for 3 minutes before opening bag. Always cook product until internal temperature reaches 165degrees f.

**Master Case GTIN:** 00880760043161

**Master Case Gross Weight:** 32.98200



### Nutrition Facts:

**Serving Size:** 2.50 OZ (70 g)  
**Servings Per Container:** 200

**Calories / Calories from Fat:** 110 / 50  
 % Daily Value \*\*

Total Fat	6 g	9%
Saturated Fat	2.5 g	13%
Trans Fat	0 g	
Cholesterol	35 mg	12%
Sodium	270 mg	11%
Total Carbohydrate	2 g	1%
Dietary Fiber	1 g	4%
Sugars	0 g	
Protein	14 g	
Vitamin A		2%
Vitamin C		2%
Calcium		2%
Iron		10%

\*\* Percent Daily values are based on a 2,000 calorie diet. Your daily values may be higher or lower depending on your calorie needs.

The data contained on this spec sheet has been approved by Child Nutrition Labeling Technologist, Kimberly Scardicchio.



AdvancePierre Foods • 9990 Princeton-Glendale Rd. • Cincinnati, Ohio 45246 • Phone: 1-800-969-2747 •  
[www.advancepierre.com](http://www.advancepierre.com)  
 Date Generated: 9/9/2020



## Burrito Bean and Cheese – CKC FPR & Recipe #5932

Add to Cart

**Product Description:** Pinto beans, Cheddar Cheese, wrapped in a hand-stretched whole grain-rich wheat flour tortilla - individually packaged

**Meal Plans:** <http://www.healtheliving.net/instance/2023701/trict/2000105/school/2002083/menu/2001859>

NUTRITIONAL FACTS	USDA DONATED FOODS	HEATING INSTRUCTIONS	SHIPPING INFORMATION	INGREDIENTS	CN CONTRI
<p><b>Ingredients for Xtreme Bean &amp; Cheese Burritos filling:</b></p> <p>Ingredients: Filling: Water, Pinto Beans, Cheddar Cheese (Pasteurized Milk, Cheese Culture, Salt, Enzymes, May contain Annatto Color), Textured Vegetable Protein Product [Soy Flour, Caramel Color, Zinc Oxide, Ferrous Sulfate, Niacinamide, Calcium Pantothenate, Pyridoxine Hydrochloride (B6), Riboflavin (B2), Thiamine Mononitrate (B1), Vitamin A Palmitate, and Vitamin B12], Salt, Flavorings, Modified Food Starch (Refined From Corn).</p> <p><b>Ingredients for tortilla:</b></p> <p>Whole Wheat Flour Tortilla, Soy Flour Enriched (Wheat Flours [Whole Wheat Flour, Enriched Bleached Flour (Wheat Flour, Niacin, Reduced Iron, Thiamine Mononitrate, Riboflavin, Folic Acid)], Water, Soy Flour, Soybean Oil, Potato Starch, Pea Fiber, Distilled Monoglyceride, Wheat Gluten, Glycerine, Salt, Baking Powder (Corn Starch, Sodium Bicarbonate, Sodium Aluminum Sulfate, Monocalcium Phosphate).</p>					<p><b>Allergens:</b></p> <p>Contains WHEAT, SOY , MILK</p> <p><b>All Products:</b></p> <p>*No MSG</p> <p>*Not Kosher</p>

# Grilled Cheese Sandwich

FPR Rec. #4709

## Product Information

W code: W590

Integrated Food Service: #C13400

Serving/case: 72

Net Weight: 18.86 lbs

## Crediting Information per Serving

Serving size: 1 each (4.19oz)

Meat or M/A: 2 oz eq

Grain: 2 oz eq

Vegetable:

Fruit:

CN Label: Yes\*

\*Obtain CN label from product package

## Nutrition Facts

Serving Size: 1 each (4.19oz)

Amount Per Serving

**Calories 280** Calories from Fat 90

**Total Fat 10g**

Sat. Fat 6g

Trans Fat 0g

**Cholesterol 32mg**

**Sodium 580mg**

**Carbohydrates 31g**

Dietary Fiber 3g

Sugars 6g

**Protein 19g**

Vitamin A 17%

Calcium 47%

Vitamin C 2%

Iron 6%

## Preparation Instructions

Do not remove wrap before heating. Note, oven temperatures may vary.

From frozen:

Conventional oven 325°F for 18-20 minutes

Convection oven: 300°F for 18-20 minutes

From thawed:

Conventional oven 350°F for 10-12 minutes

Convection oven 325 for 10-12 minutes

## Ingredients

**Whole Grain Bread:** Water, whole wheat flour, enriched bread flour ( bleached wheat flour, mated barley flour, niacin, reduced iron, thiamine mononitrate, riboflavin, folic acid), bread base (sugar, soy oil, dextrose, salt, wheat flour, mono and diglycerides, calcium stearoyl lactylate, wheat gluten, calcium sulfate, diacetyl tartaric acid esters of mono and diglycerides, ammonium sulfate, ethoxylated mono and diglycerides, guar gum, ascorbic acid, monocalcium phosphate, potassium iodite, milk and skim milk, milk fat , whey protein concentrate, contain less than 2% of salt, sodium citrate, potassium citrate, guar fun, locust bean gum xanthan gum.

**Mozzarella cheese:** pasteurized part skim milk, cheese cultures salt and enzymes, soybean oil.

Allergens: Wheat, milk, soy



140-3 oz Ultimate Cheddar™ Cheese Dip Cups. Meal Contribution Credits per Serving: 1m/ma

FPR Recipe #5886

**Product Code:** 39911000034500

Land O Lakes® Ultimate Cheddar™ Cheese Dip Cups.

## Ingredients

Cheddar Cheese (cultured pasteurized milk, salt, enzymes), Whey, Skim Milk, Reduced Fat Cheddar Cheese (cultured Pasteurized reduced fat milk, salt, enzymes), Potassium and Sodium Phosphates, Maltodextrin, Contains Less than 2% of: Glucono-Delta-Lactone, Natural Flavors, Carrageenan, Lactic Acid, Mono and Diglycerides, Sorbic Acid (preservative), Salt, apo-Carotenol for color.  
Contains: Milk

## Specification Details

GTIN-Case: 10034500399118  
GTIN-Each: 00034500399111  
Shipping Requirements: 34 to 75F(Protected/Insulated)  
Storage Requirements: Protected/Insulated (34 to 75 F)  
Allergens (Known to Contain): Milk and Milk Products  
Package Dimensions:

Each	Case	Pallet
Height: 2.95 in	Height: 6.25 in	Height: 36.81 in
Width: 2.95 in	Width: 15.25 in	Width: 40 in
Depth: 1.51 in	Depth: 21.25 in	Depth: 48 in
Volume: .0076 Cu. Ft	Volume: 1.1721 Cu. Ft	Volume: 40.9 Cu. Ft
Net Weight: 85.05 g	Net Weight: 26.25 lb	Net Weight: 656.25 lb
Gross Weight: 90.9 g	Gross Weight: 28.25 lb	Gross Weight (w/o pallet): 776.25 lb
Tare Weight: 5.85 g	Tare Weight: 2 lb	

Product Type: Pallet  
Units Per Case: 140  
Cases/Layer: 5  
Number of Layers: 5  
Cases/Pallet: 25  
Whse Stacking Height: 2  
Lot Code Format: Line 1: LOT,3 digit plant id, last digit of prod. year, 3 digit julian date, 2 digit line #\_(military time, hh:mm)\_(optional plant information)  
Line 2: EXP\_mm\_dd\_yy(yy)\_2 character plant code\_(optional plant information)

**Product Shipping Policy:** Land O'Lakes products are coded with an Expiration Date. Land O'Lakes guarantees a minimum of 90 days of freshness from the date of shipment from Land O'Lakes warehouse facilities when product is handled and stored as recommended.

**Shelf Life:** This product has a total shelf life of 180 days from date of manufacture.

**Food Safety:** Land O'Lakes, Inc. regards Hazard Analysis Critical Control Points (HACCP) as the cornerstone of a food safety system. HACCP focuses on food safety by analysis and control of potential biological, chemical, and physical hazards. An internationally recognized system that is required by many customers, HACCP has been mandated for some industries by the FDA and USDA. All Land O'Lakes, Inc. Dairy Foods manufacturing facilities have targeted assessment programs for HACCP. In addition, Land O'Lakes, Inc. provides corporate guidance, oversight and assesses compliance of the systems.

**Quality Assurance:** Land O'Lakes maintains a quality assurance program that ensures the quality of all raw materials, process operating conditions, and finished product requirements. Please note that all information contained within this document is subject to change. Customer Service: 1-800-328-9610

**Preparation Type:** Ready to Eat,Steaming

**Preparation Instructions:** Ready to eat at room temperature. See package for detailed preparation. If heated, product temperature should not exceed 140°F. Heat in a convection oven set at 200°F for 12-15 minutes or heat in a conventional oven set at 200°F for 22-25 minutes. Do not microwave. Warming unit not recommended for heating. Always use caution to avoid burns when handling and eating warmed cheese sauce.

**Serving Suggestions:** Serve with chips, breads and vegetables for lunch or afterschool snack. Self-serve bars. Field Trips. Emergency and summer feeding.

Phone: 1-800-328-1322

Fax: 651-234-8522

Land O'Lakes, Inc., P.O. Box 64101, St. Paul, MN 55164  
Email: [businessinfo@landolakes.com](mailto:businessinfo@landolakes.com)

Website: [www.landolakes.com](http://www.landolakes.com)

Land O'Lakes, Inc. maintains a quality assurance program to ensure the quality of all raw materials, process operating conditions, and finished product requirements. Please note that the information contained within this document is subject to change. Such information is provided for customer's informational purposes only, and any other use by customer (including, but not limited to, its incorporation into customer's labeling), is at customer's own risk. Land O'Lakes shall have no resultant liability. Land O'Lakes disclaims all representations or warranties, express or implied, and expressly disclaims any warranty of merchantability or fitness for a particular purpose.



FPR Recipe # 5032, 5956  
IW

**ALBIE'S FOOD PRODUCTS, LLC**  
**NUTRITIONAL PANEL & INGREDIENT LIST**  
**WHOLE GRAIN CHEESE CALZONE**  
**48-4.5 oz. Whole Grain Cheese Calzone**  
**(Mozzarella Cheese and Pizza Sauce in a Whole Grain Crust)**  
**Product Code #816**

Nutrition Facts	
48 servings per container	
Serving size	4.5oz (128g)
Amount per serving	
<b>Calories</b>	<b>270</b>
% Daily Value*	
Total Fat 11g	14%
Saturated Fat 5g	25%
Trans Fat 0g	
Cholesterol 25mg	8%
Sodium 430mg	19%
Total Carbohydrate 28g	10%
Dietary Fiber 3g	11%
Total Sugars 3g	
Includes 2g Added Sugars	4%
Protein 16g	
Vitamin D 0mcg	0%
Calcium 301mg	25%
Iron 2mg	10%
Potassium 129mg	2%
<small>*The % Daily Value tells you how much a nutrient in a serving of food contributes to a daily diet. 2,000 calories a day is used for general nutrition advice.</small>	



**C.N. EQUIVALENTS – 2 MMA & 2 GRAINS**

**INGREDIENTS:** **CRUST:** Water, Whole Wheat Flour, Wheat flour enriched (niacin, reduced iron, thiamine mononitrate riboflavin, folic acid), Malted Barley Flour, Isolated Soy Protein (isolated soy protein with less than 2% soy lecithin), Soybean oil (citric acid), Sugar, Yeast (sorbitan monostearate, ascorbic acid), Salt (yellow prussiate of soda), Corn meal. **FILLING** Mozzarella Cheese (pasteurized part-skim milk, cheese culture, salt, enzymes) May contain: Pasteurized Milk and Skin Milk, Modified Corn Starch, Nonfat Milk, Modified Food Starch, Powdered Cellulose, Potassium Chloride, Natural Flavors Ascorbic Acid (to protect flavor), Crushed Tomato, Water, Seasoning (Salt, Spices, garlic, less than 2% corn oil as : processing aid). **CONTAINS: WHEAT, SOY AND MILK PRODUCTS.**

**SHELF LIFE:** Frozen – 365 days, Refrigerated – 5-7 days

**For Food Safety follow these COOKING instructions carefully**

Calzone Cooking Instructions: For best results thaw product before cooking. Remove packaging. Ovens and microwaves may vary; cooking times may need to be adjusted. For Microwave (1100W), Cook for 1 ½-2 minutes or until internal temperature reaches 160°. Additional cooking time may be required for lower wattage microwave ovens. For Conventional oven: remove from container it is not oven safe. Cook for 10-12 minutes at 350° or until internal temperature reaches 160°. **FOR FOOD SAFETY, ENSURE PRODUCT REACHES AN INTERNAL TEMPERATURE OF 160°**



*Keven Clawson*

FPR Recipe # 4721



		<b>ProView™ FULLY COOKED CHICKEN BREAST TENDER FRITTER</b> <b>PRODUCT CODE: 63150-WG 4/5 lbs. 20lb. Case</b>																																																									
<b>Effective</b>	8/1/2018	<b>Address</b>	1150 Aviation Blvd., Gainesville, Georgia 30501																																																								
<b>Supersedes</b>	1/9/2018	<b>Phone</b>	770-534-2344																																																								
<b>GENERAL DESCRIPTION</b>																																																											
I. 5LBS, FROZEN, FULLY COOKED CHICKEN BREAST TENDER FRITTER. II. TARGET TENDER WEIGHT: 1.80 OZ. III. THIS PRODUCT IS PREPARED FROM FRESH, WHOLESOME CHICKEN, WHICH IS USDA INSPECTED. IV. THIS PRODUCT SHALL BE FREE FROM OFF FLAVORS AND AROMAS AND DISCOLORATION.																																																											
<b>INGREDIENT STATEMENT</b>																																																											
Ingredients: Chicken Breast with Rib Meat, Water, Vegetable Protein Product (Isolated Soy Protein, Magnesium Oxide, Zinc Oxide, Niacinamide, Ferrous Sulfate, Vitamin B12, Copper Gluconate, Vitamin A Palmitate, Calcium Pantothenate, Pyridoxine Hydrochloride, Thiamine Mononitrate, and Riboflavin), Salt, Sodium Phosphates. Breaded With: Whole Wheat Flour, Enriched Wheat Flour (Enriched with Niacin, Reduced Iron, Thiamine Mononitrate, Riboflavin, Folic Acid), Salt, Leavening (Sodium Aluminum Phosphate, Sodium Bicarbonate), Soybean Oil, Hydrolyzed Corn Gluten Protein, Spices, Paprika, Onion Powder, Garlic Powder, Malted Barley Flour, Extractives of Paprika and Turmeric. Predusted and Battered With: Water, Whole Wheat Flour, Modified Corn Starch, Yellow Corn Flour, Salt, Soybean Oil, Leavening (Sodium Aluminum Phosphate, Sodium Bicarbonate), Spices. Breading is set in Vegetable Oil.																																																											
<b>CONTAINS: WHEAT, SOY.</b>																																																											
<b>GENERAL INFORMATION</b>																																																											
<b>Product Code:</b>	63150-WG	<b>Shelf Life: Frozen / Unopened</b>	365 Days																																																								
<b>SPEC#:</b>	63150-WG	<b>Shelf Life at Receiving:</b>	50% Remaining																																																								
<b>UCC Code (GTIN)</b>	10889752631505	<b>Finished Product Storage:</b>	Minimum -10° F / Max 10° F																																																								
<b>VENDOR#</b>	N/A	<b>Storage Temperature</b>	Minimum -10° F / Max 10° F																																																								
	N/A	<b>Shipping Temperature</b>	Minimum -10° F / Max 20° F																																																								
<b>ALLERGEN AND SENSITIVE INGREDIENT INFORMATION</b>																																																											
<b>CONTAINS:</b>	<b>YES/NO</b>	<b>CONTAINS:</b>	<b>YES/NO</b>																																																								
Wheat:	YES	Tree Nuts:	No																																																								
Soybean:	YES	Shellfish:	No																																																								
Peanut:	No	Fish:	No																																																								
Dairy:	No	Eggs:	No																																																								
		MSG:	No																																																								
		Sulfites:	No																																																								
		Colors:	No																																																								
<b>PACKAGING INFORMATION</b>																																																											
<b>Net Weight of Bag</b>	5 lbs.	<b>Case Dimensions</b>	17.313"L X 11.313"W X 9.625"H																																																								
<b>Gross Weight of Bag</b>	5.04 lbs.	<b>Case Cube</b>	1.09 ft³																																																								
<b>Bags per Case</b>	4 bags	<b>Pallet Cube</b>	91.8 ft³																																																								
<b>Counts / Bag</b>	38-54 Portions	<b>Ti</b>	9																																																								
<b>Net Case Weight</b>	20 lbs.	<b>High</b>	8																																																								
<b>Gross Case Weight.</b>	21.68 lbs.	<b>Cases/Pallet</b>	72																																																								
<b>Counts / Case</b>	151-216 Portions																																																										
<b>PRODUCT FORMULATION / MMA STATEMENT</b>																																																											
John Soules Foods, Inc. certifies that the above information is true and correct and that a <u>5.4</u> oz. serving of the above product (ready for serving) contains <u>2.00</u> oz. Of equivalent meat/meat alternate when prepared according to directions. This product also provides <u>2.00 grain equivalent</u> credits per <u>5.4 oz.</u> serving. I further certify that any APP used in the product conforms to the Food and Nutrition Service Regulations (7CFR Parts 210, 220, 225, 226, Appendix A as demonstrated by the attached supplier documentation.																																																											
<b>63150-WG</b> <b>FULLY COOKED FRITTER</b> <b>CHICKEN BREAST TENDER</b> <small>Ingredients: Chicken Breast with Rib Meat, Water, Vegetable Protein Product (Isolated Soy Protein, Magnesium Oxide, Zinc Oxide, Niacinamide, Ferrous Sulfate, Vitamin B12, Copper Gluconate, Vitamin A Palmitate, Calcium Pantothenate, Pyridoxine Hydrochloride, Thiamine Mononitrate, and Riboflavin), Salt, Sodium Phosphates. Breaded With: Whole Wheat Flour, Enriched Wheat Flour (Enriched with Niacin, Reduced Iron, Thiamine Mononitrate, Riboflavin, Folic Acid), Salt, Leavening (Sodium Aluminum Phosphate, Sodium Bicarbonate), Soybean Oil, Hydrolyzed Corn Gluten Protein, Spices, Paprika, Onion Powder, Garlic Powder, Malted Barley Flour, Extractives of Paprika and Turmeric. Predusted and Battered With: Water, Whole Wheat Flour, Modified Corn Starch, Yellow Corn Flour, Salt, Soybean Oil, Leavening (Sodium Aluminum Phosphate, Sodium Bicarbonate), Spices. Breading is set in Vegetable Oil.</small> <small>KEEP FROZEN</small>  <small>PROD. DATE: 08/01/2018</small>  <small>NET WT. 20 LBS.</small>		<b>63150-WG</b> <b>FULLY COOKED FRITTER</b> <b>CHICKEN BREAST TENDER</b> <small>Ingredients: Chicken Breast with Rib Meat, Water, Vegetable Protein Product (Isolated Soy Protein, Magnesium Oxide, Zinc Oxide, Niacinamide, Ferrous Sulfate, Vitamin B12, Copper Gluconate, Vitamin A Palmitate, Calcium Pantothenate, Pyridoxine Hydrochloride, Thiamine Mononitrate, and Riboflavin), Salt, Sodium Phosphates. Breaded With: Whole Wheat Flour, Enriched Wheat Flour (Enriched with Niacin, Reduced Iron, Thiamine Mononitrate, Riboflavin, Folic Acid), Salt, Leavening (Sodium Aluminum Phosphate, Sodium Bicarbonate), Soybean Oil, Hydrolyzed Corn Gluten Protein, Spices, Paprika, Onion Powder, Garlic Powder, Malted Barley Flour, Extractives of Paprika and Turmeric. Predusted and Battered With: Water, Whole Wheat Flour, Modified Corn Starch, Yellow Corn Flour, Salt, Soybean Oil, Leavening (Sodium Aluminum Phosphate, Sodium Bicarbonate), Spices. Breading is set in Vegetable Oil.</small> <small>KEEP FROZEN</small>  <small>PROD. DATE: 08/01/2018</small>  <small>NET WT. 20 LBS.</small>																																																									
<table border="1" style="width: 100%; border-collapse: collapse;"> <tr> <th colspan="2" style="text-align: left;"><b>Nutrition Facts</b></th> </tr> <tr> <td colspan="2">Serving Size (153g)</td> </tr> <tr> <td colspan="2">Servings Per Container</td> </tr> <tr> <td colspan="2">Amount Per Serving</td> </tr> <tr> <td><b>Calories 250</b></td> <td><b>Calories from Fat 70</b></td> </tr> <tr> <td colspan="2" style="text-align: center;"><b>% Daily Value*</b></td> </tr> <tr> <td><b>Total Fat 8g</b></td> <td><b>12%</b></td> </tr> <tr> <td><b>Saturated Fat 1g</b></td> <td><b>5%</b></td> </tr> <tr> <td><b>Trans Fat 0g</b></td> <td></td> </tr> <tr> <td><b>Cholesterol 50mg</b></td> <td><b>17%</b></td> </tr> <tr> <td><b>Sodium 600mg</b></td> <td><b>25%</b></td> </tr> <tr> <td><b>Total Carbohydrate 22g</b></td> <td><b>7%</b></td> </tr> <tr> <td><b>Dietary Fiber 2g</b></td> <td><b>8%</b></td> </tr> <tr> <td><b>Sugars 0g</b></td> <td></td> </tr> <tr> <td><b>Protein 22g</b></td> <td></td> </tr> <tr> <td><b>Vitamin A 2%</b></td> <td><b>Vitamin C 2%</b></td> </tr> <tr> <td><b>Calcium 2%</b></td> <td><b>Iron 10%</b></td> </tr> <tr> <td colspan="2">*Percent Daily Values are based on a diet of other people's secrets.</td> </tr> <tr> <td colspan="2">Your daily values may be higher or lower depending on your calorie needs.</td> </tr> <tr> <td>Calories</td> <td>2,000 2,500</td> </tr> <tr> <td>Total Fat</td> <td>Less than 65g 80g</td> </tr> <tr> <td>Saturated Fat</td> <td>Less than 20g 25g</td> </tr> <tr> <td>Cholesterol</td> <td>Less than 300mg 300mg</td> </tr> <tr> <td>Sodium</td> <td>Less than 2,400mg 2,400mg</td> </tr> <tr> <td>Total Carbohydrate</td> <td>300g 375g</td> </tr> <tr> <td>Dietary Fiber</td> <td>25g 30g</td> </tr> <tr> <td colspan="2">Calories per gram:</td> </tr> <tr> <td>Fat 9</td> <td>Carbohydrate 4 Protein 4</td> </tr> </table>				<b>Nutrition Facts</b>		Serving Size (153g)		Servings Per Container		Amount Per Serving		<b>Calories 250</b>	<b>Calories from Fat 70</b>	<b>% Daily Value*</b>		<b>Total Fat 8g</b>	<b>12%</b>	<b>Saturated Fat 1g</b>	<b>5%</b>	<b>Trans Fat 0g</b>		<b>Cholesterol 50mg</b>	<b>17%</b>	<b>Sodium 600mg</b>	<b>25%</b>	<b>Total Carbohydrate 22g</b>	<b>7%</b>	<b>Dietary Fiber 2g</b>	<b>8%</b>	<b>Sugars 0g</b>		<b>Protein 22g</b>		<b>Vitamin A 2%</b>	<b>Vitamin C 2%</b>	<b>Calcium 2%</b>	<b>Iron 10%</b>	*Percent Daily Values are based on a diet of other people's secrets.		Your daily values may be higher or lower depending on your calorie needs.		Calories	2,000 2,500	Total Fat	Less than 65g 80g	Saturated Fat	Less than 20g 25g	Cholesterol	Less than 300mg 300mg	Sodium	Less than 2,400mg 2,400mg	Total Carbohydrate	300g 375g	Dietary Fiber	25g 30g	Calories per gram:		Fat 9	Carbohydrate 4 Protein 4
<b>Nutrition Facts</b>																																																											
Serving Size (153g)																																																											
Servings Per Container																																																											
Amount Per Serving																																																											
<b>Calories 250</b>	<b>Calories from Fat 70</b>																																																										
<b>% Daily Value*</b>																																																											
<b>Total Fat 8g</b>	<b>12%</b>																																																										
<b>Saturated Fat 1g</b>	<b>5%</b>																																																										
<b>Trans Fat 0g</b>																																																											
<b>Cholesterol 50mg</b>	<b>17%</b>																																																										
<b>Sodium 600mg</b>	<b>25%</b>																																																										
<b>Total Carbohydrate 22g</b>	<b>7%</b>																																																										
<b>Dietary Fiber 2g</b>	<b>8%</b>																																																										
<b>Sugars 0g</b>																																																											
<b>Protein 22g</b>																																																											
<b>Vitamin A 2%</b>	<b>Vitamin C 2%</b>																																																										
<b>Calcium 2%</b>	<b>Iron 10%</b>																																																										
*Percent Daily Values are based on a diet of other people's secrets.																																																											
Your daily values may be higher or lower depending on your calorie needs.																																																											
Calories	2,000 2,500																																																										
Total Fat	Less than 65g 80g																																																										
Saturated Fat	Less than 20g 25g																																																										
Cholesterol	Less than 300mg 300mg																																																										
Sodium	Less than 2,400mg 2,400mg																																																										
Total Carbohydrate	300g 375g																																																										
Dietary Fiber	25g 30g																																																										
Calories per gram:																																																											
Fat 9	Carbohydrate 4 Protein 4																																																										

# Whole Grain Breaded Chicken Breast Pattie

FPR Recipe # 3759

Item #: 68024

**Product Description:** Fully cooked, chopped chicken with a whole grain-rich breading. Soy added. Round shape. CN labeled.

**Technical Name:** Fully Cooked Breaded Chicken Patties Made with White Breast and Rib Meat

**Brand:** Advance Pierre

## Product Details

**Data Generated:** 9/9/2020  
**Data Valid As Of:** 4/12/2019  
**Packing Type:** BULK-BAG  
**Pieces Per Case (Approx.):** 60  
**Piece Size (oz.):** 3.10  
**Case Net Weight (lb.):** 11.63

**Case Dimensions:** Width: 10.00  
Length: 17.38  
Height: 6.94  
Case Cube: 0.70

**Cases / Pallet:** 60  
**Case TiHi:** 10 x 6

**Credit (CN):** 2 MMA CHICKEN  
**Equivalent Grain:** 1.00

### Ingredients:

INGREDIENTS: Chicken Breast with Rib Meat, Water, Isolated Soy Protein, Vegetable Protein Product [Soy Protein Concentrate, Zinc Oxide, Niacinamide, Ferrous Sulfate, Copper Gluconate, Vitamin A Palmitate, Calcium Pantothenate, Thiamine Mononitrate (B1), Pyridoxine Hydrochloride (B6), Riboflavin (B2), Cyanocobalamin (B12)], Textured Vegetable Protein Product [Soy Flour, Zinc Oxide, Niacinamide, Ferrous Sulfate, Copper Gluconate, Vitamin A Palmitate, Calcium Pantothenate, Thiamine Mononitrate (B1), Pyridoxine Hydrochloride (B6), Riboflavin (B2), Cyanocobalamin (B12), (May Contain Caramel Color)], Salt, Potassium and Sodium Phosphates, Chicken Broth. Breaded With Whole Wheat Flour, Enriched Wheat Flour (Niacin, Reduced Iron, Thiamine Mononitrate, Riboflavin, Folic Acid), Dehydrated Potatoes (Potatoes, Mono and Diglycerides, Dextrose), Yeast, Sugar, Salt, Soybean Oil (Processing Aid). Battered With: Water, [Whole Wheat Flour, Enriched Wheat Flour (Niacin, Reduced Iron, Thiamine Mononitrate, Riboflavin, Folic Acid), Potato Flour, Salt, Modified Corn Starch, Leavening (Calcium Acid Pyrophosphate, Monocalcium Phosphate, Sodium Bicarbonate), Flavor (Contains Maltodextrin, Salt, Natural Flavors), Hydrolyzed Corn Protein, Onion Powder, Garlic Powder, Yeast Extract, Chicken Broth, Spice]. Set in Vegetable Oil. CONTAINS: Wheat, Soy

**Shelf Life (days):** 455  
*Starting from date of production when kept @ 0°F or below.*

### Preparation Method:

Conventional Oven: From frozen bake at 350 degrees f for 20 minutes.

Convection Oven: From frozen bake at 350 degrees f for 9-11 minutes.

**Master Case GTIN:** 00880760092510

**Master Case Gross Weight:** 12.64000

### Nutrition Facts:

**Serving Size:** 3.10 OZ (87 g)

**Servings Per Container:** 60

Calories / Calories from Fat: 230 / 140

% Daily Value \*\*

Total Fat	15 g	23%
Saturated Fat	3 g	15%
Trans Fat	0 g	
Cholesterol	30 mg	10%
Sodium	280 mg	12%
Total Carbohydrate	12 g	4%
Dietary Fiber	1 g	4%
Sugars	0 g	
Protein	11 g	
Vitamin A		2%
Vitamin C		2%
Calcium		2%
Iron		8%

\*\* Percent Daily values are based on a 2,000 calorie diet. Your daily values may be higher or lower depending on your calorie needs.

The data contained on this spec sheet has been approved by Child Nutrition Labeling Technologist, Kimberly Scardicchio.



AdvancePierre Foods • 9990 Princeton-Glendale Rd. • Cincinnati, Ohio 45246 • Phone: 1-800-969-2747 •

www.advancepierre.com

Date Generated: 9/9/2020





FPR Recipe # 3155, 4742



## Nutrition Facts

Serving Size: 1 PIECE (62g)  
Servings Per Container: About 220

Amount Per Serving		Calories 100	Calories from Fat 35
		% Daily Value*	
Total Fat	3.5g	5%	
Saturated Fat	1g	5%	
Trans Fat	0g		
Polyunsaturated Fat	1g		
Monounsaturated Fat	1.5g		
Cholesterol	35mg	12%	
Sodium	200mg	8%	
Total Carbohydrate	1g	0%	
Dietary Fiber	0g	0%	
Sugars	0g		
Protein	15g	30%	
Vitamin A	0%	Vitamin C	0%
Calcium	0%	Iron	4%

\* Percent daily values are based on a 2,000 calorie diet. Your daily values may be higher or lower depending on your calorie needs.

**CN Label:** Yes

**CN Label Numbers:**

089298

**CN Statement:** One 2.21 oz. fully cooked, glazed, grilled, portioned chicken breast filet provides 2.00 oz. equivalent meat/meat alternate for the Child Nutrition Meal Pattern Requirements.

To obtain a signed copy of the CN statement for this item, please contact the Tyson Food Service Concierge via e-mail or call 1-800-248-9766.



## Grilled Made with Whole Muscle Filet

Product Code: 70322-928

UPC Code: 00023700033987

- Available for commodity reprocessing - USDA 100103
- Consistent piece size
- Easy to Portion
- Whole-muscle pieces
- Fully cooked

## PREPARATION

Appliances vary, adjust accordingly. Convection Oven Preheat oven to 350°F, no steam, medium low fans. Place frozen filets in a single layer on a parchment lined baking sheet, cover tightly with foil and heat for 18 to 22 minutes. Conventional Oven Preheat oven to 400°F. Place frozen filets in a single layer on a parchment lined baking sheet, cover tightly with foil and heat for 28 to 32 minutes.

## PIECE COUNT

Minimum of 220 2.21OZ PIECE(s) per Case  
Minimum of 35 Pieces per Bag.

## MASTER CASE

Gross Weight	38,8209 LB	Width:	15.625 IN
Net Weight	30.39 LB	Length:	23.5 IN
Cube:	1.78 FT	Height:	8.375 IN

## PALLET CONFIGURATION

Ti:	5	Hi:	8
-----	---	-----	---

## INGREDIENTS

Boneless, skinless chicken breasts with rib meat, water, isolated soy protein, seasoning [brown sugar, salt, onion powder, chicken stock, canola oil, yeast extract, carrot powder, vegetable stock (carrot, onion, celery), garlic powder, flavors, maltodextrin, silicon dioxide and citric acid], sodium phosphates, seasoning (potassium chloride, rice flour). GLAZED WITH: Water, seasoning [maltodextrin, modified corn starch, salt, chicken stock, yeast extract, canola oil, sugar, dextrin, potassium chloride, xanthan gum, tartaric acid, silicon dioxide, flavors, vegetable stock (carrot, onion, celery), garlic powder, carrot powder and onion powder], soybean oil.

CONTAINS soy

## STORAGE

Shelf Life:	365 days
Storage Temp:	0 F
Storage Method:	Frozen

# Product Information



## Whole Grain Breaded Golden Crispy Made with Whole Muscle Boneless Wing, 0.79 oz.

Product Code: 70362-928

UPC Code: 00023700035592

- Available for commodity reprocessing - USDA 100103
- Made with whole muscle white meat for the same premium bite and texture of whole muscle but without the price
- Consistent piece sizes for easy CN portioning with an authentic made-from-scratch appearance
- Great Golden Crispy breading profile that is Kid Tested, Kid Approved™

### PREPARATION

Appliances vary, adjust accordingly. Convection Oven Preheat oven to 375°F, no steam, medium low fans. Place frozen chunks on a parchment lined baking sheet and heat for 10-12 minutes. Conventional Oven Preheat oven to 400°F. Place frozen chunks on a baking sheet lined with parchment paper. Heat for 10-12 minutes.

### CASE PACK

605 PIECE(s) per Case  
Average

### MASTER CASE

Gross Weight	32.5215 LB	Width:	15.625 IN
Net Weight	30 LB	Length:	23.5 IN
Cube:	1.78 FT	Height:	8.375 IN

### PALLET CONFIGURATION

Ti:	5	Hi:	8
-----	---	-----	---

### STORAGE

Shelf Life:	365 days
Storage Temp:	0 F
Storage Method:	Frozen

### INGREDIENTS

Portioned chicken breast with rib meat, water, isolated soy protein, seasoning [brown sugar, salt, onion powder, chicken stock, canola oil, yeast extract, carrot powder, vegetable stock (carrot, onion, celery), garlic powder, flavors, maltodextrin, silicon dioxide and citric acid], sodium phosphates, seasoning (potassium chloride, rice flour). BREADED WITH: Whole wheat flour, water, enriched wheat flour (wheat flour, niacin, reduced iron, thiamine mononitrate, riboflavin, folic acid), salt, dried onion, dried garlic, sugar, wheat gluten, torula yeast, dextrose, spice, dried yeast, paprika extract (color), turmeric extract (color). Breading set in vegetable oil.



### Nutrition Facts

Serving Size: CN SVG 5 PCE (111g)  
Servings Per Container: About 122

Amount Per Serving  
Calories 200      Calories from Fat 80

	% Daily Value*
Total Fat 9g	14%
Saturated Fat 2g	10%
Trans Fat 0g	
Polyunsaturated Fat 4.5g	
Monounsaturated Fat 2.5g	
Cholesterol 25mg	8%
Sodium 330mg	14%
Total Carbohydrate 13g	4%
Dietary Fiber 3g	12%
Sugars 1g	
Protein 18g	36%

Vitamin A 0%      Vitamin C 0%  
Calcium %      Iron 4%

\* Percent daily values are based on a 2,000 calorie diet. Your daily values may be higher or lower depending on your calorie needs.

**CN Label:** Yes

**CN Label Numbers:** 094015

**CN Statement:** Five 0.79 oz. fully cooked, breaded chicken breast chunks with rib meat provide 2.00 oz. equivalent meat/meat alternate and 1.00 oz equivalent grains for Child Nutrition Meal Pattern Requirements.

To obtain a signed copy of the CN statement for this item, please contact the Tyson Food Service Concierge via [e-mail](#) or call 1-800-248-9766.

# Mandarin Orange Chicken

(100% White Whole Grain)

Product Code: 8-52724-15552-4

FPR Recipe # 5752  
3908

# Ling's

## 5th Taste®

*Crispy chicken, glazed with our zesty Mandarin Orange Sauce*

Our products do not contain MSG, artificial coloring or flavoring, peanuts, peanut oil, or lard and are zero trans fat.



**Pack size: 6 - 5 lb. Chicken • 6 - 36 oz. Sauce**

### Ingredients:

**Chicken:** Boneless, skinless chicken leg meat, water, cornstarch, white whole grain wheat flour, soybean oil, liquid whole eggs, salt, white pepper powder, ground ginger, garlic, green onion.

**Sauce:** Water, sugar, vinegar, soy sauce (soybeans, wheat flour, water, salt, straw mushroom extractives), modified starch, mandarin orange juice and peel, chili powder, garlic, ginger, green onion.

**Allergens:** Egg products, soy, wheat, and citrus

**Made in the USA**

### Child Nutrition

Meat/Meat Alternate 2.88 oz. raw chicken

Yield 2 oz. cooked chicken per portion

Recommended serving size:

3.6 oz. = 2.5 oz. chicken and 1.1 oz. sauce

Approximate servings per case: 192

This 3.6 oz. serving provides 2 meat/meat alternate according to the Food Buying Guide for Child Nutrition Programs.

I certify this information is true and correct:

*Loree Espelding*

Vice President

12/04/12

## Nutrition Facts

Serving Size 3.6 oz. (100g)

Serving Per Container 192

### Amount Per Serving

**Calories** 150      Calories from Fat 25

% Daily Values\*

**Total Fat** 3g      **5%**

Saturated Fat 0.5g      **3%**

Trans Fat 0g

**Cholesterol** 40mg      **13%**

**Sodium** 280mg      **12%**

**Total Carbohydrate** 19g      **6%**

Dietary Fiber 0g      **0%**

Sugars 10g

**Protein** 11g      **22%**

Vitamin C 2%      Iron 4%

\*Percent Daily Values are based on a 2,000 calorie diet. Your Daily Values may be higher or lower depending on your calorie needs.

	Calories	2,000	2,500
Total Fat	Less than	65g	80g
Sat Fat	Less than	20g	25g
Cholesterol	Less than	300mg	300mg
Sodium	Less than	2400mg	2400mg
Total Carbohydrate		300g	375g
Dietary Fiber		25g	30g

### Preparation

Place a single layer of chicken on baking sheet. Heat at 400° for 16-20 minutes or until golden brown, and internal temperature reaches 165°. Heat sauce in steamer, low boil in the bag, or microwave. Add sauce to chicken just prior to serving. Mix thoroughly to cover all chicken pieces.

### Shelf life

1 Year frozen at 32°

For further information please call, 909.593.4797

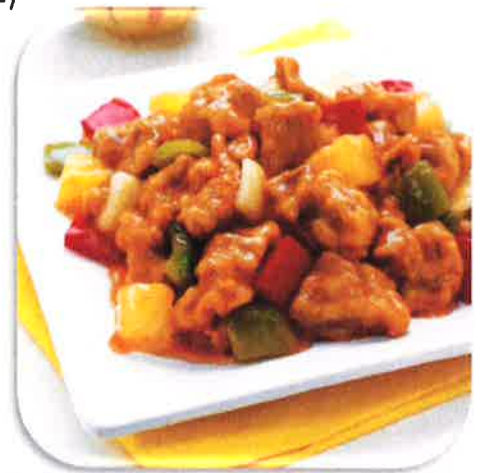


# Sweet & Sour Chicken FPR Rec# 4399

Product Code: 8-52724-15551-7

*Crispy chicken, finished with our traditional Sweet and Sour Sauce.*

This product contains no MSG, artificial coloring or flavoring, peanuts, peanut oil, or lard and has zero trans fat.



Pack size: 6 - 5 lb. Chicken • 6 - 36 oz. Sauce

## Ingredients:

**Chicken:** Dark meat chicken chunks, water, cornstarch, white whole grain wheat flour, soybean oil, liquid whole eggs, salt, white pepper powder, garlic, ginger, and green onion.

**Sauce:** Water, sugar, ketchup (water, tomato paste, vinegar, sugar, brown sugar, salt, garlic powder, onion powder, spices, mustard, natural flavor), vinegar, modified food starch, lemon juice, cranberry sauce (cranberry, sugar, water), chili pepper, garlic, ginger, and green onion.

**Allergens:** Egg products, soy, wheat, and citrus

**Made in the USA**

## Child Nutrition

Meat/Meat Alternate 2.88 oz. raw chicken

Yield 2 oz. cooked chicken per portion

Recommended serving size:

3.6 oz. = 2.5 oz. chicken and 1.1 oz. sauce

Approximate servings per case: 192

This 3.6 oz. serving provides 2 meat/meat alternate according to the Food Buying Guide for Child Nutrition Programs.

I certify this information is true and correct:

*Loree Espelding*

Vice President

Date: 3/9/2017

## Nutrition Facts

Serving Size 3.6 oz. (100g)

Servings Per Container 192

### Amount Per Serving

**Calories** 140

Calories from Fat 27

% Daily Values\*

**Total Fat** 3g

**5%**

Saturated Fat 0.5g

**3%**

Trans Fat 0g

**Cholesterol** 40mg

**13%**

**Sodium** 200mg

**8%**

**Total Carbohydrate** 18g

**6%**

Dietary Fiber 0g

**0%**

Sugars 9g

**Protein** 11g

**22%**

Vitamin C 6%

Iron 4%

\*Percent Daily Values are based on a 2,000 calorie diet. Your Daily Values may be higher or lower depending on your calorie needs.

	Calories	2,000	2,500
Total Fat	Less than	65g	80g
Sat Fat	Less than	20g	25g
Cholesterol	Less than	300mg	300mg
Sodium	Less than	2400mg	2400mg
Total Carbohydrate		300g	375g
Dietary Fiber		25g	30g

## Preparation

Place a single layer of chicken on baking sheet. Heat at 400° for 16-20 minutes or until golden brown, and internal temperature reaches 165°. Heat sauce in steamer, low boil in the bag, or microwave. Add sauce to chicken just prior to serving. Mix thoroughly to cover all chicken pieces.

## Shelf life

1 year frozen

## SUGGESTED SPECIFICATION

### Case to contain:

- 6/5# chicken and 6/36 oz. sauce
- 192/3.6 oz. servings per case

### May not contain:

- MSG, artificial coloring or flavoring
- Isolated soy protein
- Peanuts or peanut oil

Bid Yang's 5th Taste #15551-7 or pre-approved equal only



For further information please call, 909.593.4797



• FAMILY-OWNED AND OPERATED •  
**UPPER LAKES FOODS**  
 EST 1967



**Pack Size**  
 72/4 OZ

**Vendor**  
 FOSTER  
 FARMS

**Brand**  
 FOSTER  
 FARMS

**MPC Code**  
 95150

**GTIN#**  
 00075278951507

**Product Description**

CORN DOG CHICKEN WHL GRAIN  
**Preparation & Cooking Instructions**  
 MICROWAVE (1100 WATTS) HIGH: QUANTITY  
 2. FROM THAWED 32-36F - 20 SECONDS,  
 TURN THEN 20 MORE SECONDS. FROM  
 FROZEN <10F: 30 SECONDS, TURN THEN 30  
 MORE SECONDS. INTERNAL PRODUCT  
 TEMPERATURE SHOULD REACH 160F.  
 CONFIRM WITH A MEAT THERMOMETER.  
 TIMES AND TEMPERATURES MAY VARY BASED  
 ON ACTUAL EQUIPMENT AND THE QUANTITY  
 OF PRODUCT PREPARED. ADJUST  
 ACCORDINGLY. CAUTION: PRODUCT WILL BE  
 HOT

**Handling and Storage Instructions**

Information currently unavailable.

**Ingredients**

BATTER INGREDIENTS: WATER, WHOLE WHEAT FLOUR, WHOLE  
 GRAIN CORN, SUGAR, CONTAINS 2% OR LESS OF LEAVENING  
 (SODIUM ACID PYROPHOSPHATE, SODIUM BICARBONATE), SOY  
 FLOUR, SOYBEAN OIL, SALT, EGG YOLK WITH SODIUM  
 SILICOLUMINATE, ASCORBIC ACID, EGG WHITE, DRIED HONEY,  
 ARTIFICIAL FLAVOR. FRIED IN VEGETABLE OIL. CHICKEN FRANK  
 INGREDIENTS: MECHANICALLY SEPARATED CHICKEN, WATER,  
 CORN SYRUP SOLIDS, CONTAINS LESS THAN 2% OR LESS OF  
 SPICES, SALT, POTASSIUM LACTATE, POTASSIUM ACETATE, SODIUM  
 PHOSPHATE, POTASSIUM CHLORIDE, FLAVORINGS, SODIUM  
 DIACETATE, SODIUM ERYTHORBATE, SODIUM NITRITE. CONTAINS:  
 WHEAT, SOY, EGG AND GLUTEN.

**Shipping and Packing**

**Information:**  
**Gross weight:** 19  
**Net weight:** 18  
**Catch weight:** N/A  
**Length:** 17  
**Width:** 11  
**Height:** 6.38  
**Cube:** 0.69

**Supplemental Information**

Information currently unavailable.

**Child Nutrition**

Information currently unavailable.

**Nutrition Facts**

Serving Size (Cal) 72

Serving Per Container N/A

Amount Per Serving

**Calories 240** Calories from Fat 70

% Daily Value\*

**Total Fat 8** 12%

**Saturated Fat(g) 2.5** 12%

**Trans Fat(g) N/A**

**Cholesterol(mg) 40** 13%

**Sodium(mg) 390** 16%

**Total Carbohydrate(g) 30** 10%

**Dietary Fiber(g) 5** 20%

**Sugars(g) 5**

**Protein(g) 9**

Vitamin A N/A% Vitamin C N/A%

Calcium N/A% Iron N/A%

**Nutritional Disclaimer**

Upper Lakes Foods obtains nutritional information from claims made by the product manufacturer(s). Although we have made every effort to be as accurate as possible, manufacturers frequently change formulations and it may take some time to get our records updated to reflect these changes. We suggest you continue to read product labels as we cannot guarantee the information posted here is 100% accurate and current and as such cannot be responsible for individual reactions to any product listed here. In addition, any product images displayed are for reference only and may not reflect the most current packaging. When precise nutritional information is important, our data is not a substitute for reading the label on the products you purchase or for contacting the manufacturer directly for additional details.



FPR Recipe # 3995

46025-75012

**CINNAMON GLAZED  
WHOLE GRAIN  
FRENCH TOAST STICKS**

KEEP FROZEN AT 0°F OR BELOW - DO NOT REFREEZE U D

**INGREDIENTS:** EGG MIX: Whole Eggs, Whey (milk), Sugar, Contains 2% or Less of the Following: Salt, Natural Vanilla Flavor (propylene glycol, water, alcohol, invert syrup, natural flavors, vanilla extract), Xanthan Gum, Citric Acid. **BREAD:** Whole Wheat Flour, Water, Enriched Wheat Flour (flour, malted barley flour, niacin, reduced iron, thiamin mononitrate (vitamin B1), riboflavin (vitamin B2), folic acid), Wheat Gluten, Sugar, Yeast, Soybean Oil, Salt, Ethoxylated Mono- and Diglycerides, Calcium Propionate (preservative), Calcium Sulfate, Monocalcium Phosphate, Soy Lecithin, Potassium Iodate. **CINNAMON GLAZE:** Soybean Oil, Sugar, Cinnamon, Vegetable Mono- and Diglycerides, Salt, Natural Flavors, Beta Carotene (color), Vitamin A Palmitate Added.

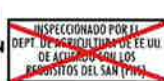
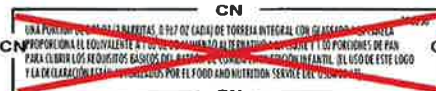
Contains: Egg, Milk, Wheat, Soy

**PAPETTI'S**
**Table  
Ready**
**TORREJA INTEGRAL CON  
GLASEADO  
A LA CANELA**

MANTENER CONGELADO A -18°C O MENOS - NO CONGELAR DE NUEVO

**INGREDIENTES:** MEZCLA DE HUEVO: huevos enteros, suero de leche, azúcar. Contiene 2% o menos de lo siguiente: sal, sabor natural de vainilla (glicerilo propileno, agua, alcohol, jarabe invertido, sabores naturales, extracto de vainilla), goma xantana, ácido cítrico. **PAN:** harina de trigo integral; agua; harina de trigo enriquecida (harina, harina de cebada maltada, micina, hieira reducida, mononitrato de tiamina (vitamina B1), riboflavina (vitamina B2), ácido fólico), Gluten de trigo, azúcar, lavadura, aceite de soja, sal, mono y diglicéridos etoxilados, propionato de calcio (conservador), sulfato de calcio, fosfato monocalcico, lecitina de soja, yodato de potasio. **GLASEADO DE CANELA:** aceite de soja, azúcar, canela, mono y diglicéridos de origen vegetal, sal, sabores naturales, beta-caroteno (color), palmitato de vitamina A hidrógeno.

Contiene: Huevo, Leche, Trigo, Soja



85 SERVINGS (3 STICKS PER SERVING) CONTAINS A MINIMUM OF 255 STICKS  
85 PORCIONES (3 BARRITAS POR PORCIÓN) CONTIENE UN MÍNIMO DE 255 BARRITAS  
NET WT. (PESO NETO) 15.41 LBS (6.99 Kg)

DISTRIBUTED BY / DISTRIBUIDO POR:  
Michael Foods, Inc.  
Nimrodton, MN 55305  
1-877-367-3447 (1-877-FOR-EGGS)

BULK PACK

**COPY - NOT FOR DOCUMENTING FEDERAL  
MEAL REQUIREMENTS**


1 07 46025 75012 0

**PAPETTI'S**

46025-75012-00

**Whole Grain Cinnamon Glazed French Toast Sticks, 85/2.9 oz**
**Product Summary**

- Made with Whole-Grain Bread
- Real Egg Batter for a Boost of Protein
- Baked - Not Fried
- No High Fructose Corn Syrup
- 0g Trans Fat per Serving
- Made in a Peanut & Tree-Nut Free Facility


**Meal Pattern Contribution (CN #095830)**

- 1 oz. equivalent Grains
- 1 oz. equivalent Meat/Meat Alternate

**Ingredient Statement**

**Egg Batter:** Whole Eggs, Whey (milk), Sugar. Contains 2% or Less of the Following: Salt, Natural Vanilla Flavor (propylene glycol, water, alcohol, invert syrup, natural flavors, vanilla extract), Xanthan Gum, Citric Acid.

**Bread:** Whole Wheat Flour, Water, Enriched Wheat Flour (flour, malted barley flour, niacin, reduced iron, thiamin mononitrate (vitamin B1), riboflavin (vitamin B2), folic acid), Wheat Gluten, Sugar, Yeast, Soybean Oil, Salt, Ethoxylated Mono- and Diglycerides, Calcium Propionate (preservative), Calcium Sulfate, Monocalcium Phosphate, Soy Lecithin, Potassium Iodate.

**Cinnamon Glaze:** Soybean Oil, Sugar, Cinnamon, Vegetable Mono- and Diglycerides, Salt, Natural Flavors, Beta Carotene (color), Vitamin A Palmitate Added.

ALLERGENS: CONTAINS EGG, MILK, SOYBEAN AND WHEAT

**Specifications**

- GTIN: 10746025750120
- Shelf Life: 12 months (frozen)
- Kosher: OUD
- Individually Wrapped: No
- Case Count: 85 (255 Sticks)
- Net Weight: 15.4 lbs
- Gross Weight: 16.9 lbs
- Case Cube: 1.45 CF
- Cases per Pallet: 56 (8 x 7)

**Prep Instructions**

**Convection Oven** Preheat to 325°F. Place single layer of frozen sticks (glaze side up) on baking sheet.

**Conventional Oven** Preheat to 350°F. Place single layer of frozen sticks (glaze side up) on baking sheet.

**Microwave** Place 1 serving (3 sticks) on a microwave safe plate (glaze side up). Heat at full power (based on 1100 watt microwave).

Note: Due to variance in oven regulations, baking and temperature may require adjustment. Product should be heated to 165 degrees Fahrenheit temperature.

**Nutrition Facts**

85 Servings Per Container  
Serving size 3 Sticks (82g)

Amount per serving  
**Calories 210**

	% Daily Value*
<b>Total Fat</b> 9g	12%
<b>Saturated Fat</b> 2g	10%
<b>Trans Fat</b> 0g	
<b>Cholesterol</b> 105mg	35%
<b>Sodium</b> 290mg	13%
<b>Total Carbohydrate</b> 26g	9%
<b>Dietary Fiber</b> 2g	7%
<b>Total Sugars</b> 11g	
Includes 10g Added Sugars	20%

<b>Protein</b> 8g	
<b>Vitamin D</b> 1mcg	6%
<b>Calcium</b> 58mg	4%
<b>Iron</b> 1mg	6%
<b>Potassium</b> 115mg	2%

\*The % Daily Value tells you how much a nutrient in a serving of food contributes to a daily diet. 2,000 calories a day is used for general nutrition advice.

Calories per gram:  
Fat 9 • Carbohydrate 4 • Protein 4

Thawed Frozen

NA 8 min.

NA 12 min.

NA 60 sec.


**MICHAEL  
FOODS**



**Pack Size**  
1/10#

**Vendor**  
CLOVERDALE  
FOODS  
COMPANY

**Brand**  
CLOVERDALE

**MPC Code**  
123312

**GTIN#**  
10076829023312



#### Product Description

WIENER BEEF LOW SOD 8-1

#### Preparation & Cooking Instructions

THAWING DIRECTIONS: Thaw frozen hot dogs in refrigerator for 72 hours to an internal temperature of 35 - 40F. STOVE TOP: Heat water to a rolling boil. Add hot dogs to the water and simmer until an internal temperature of 140F is reached. ROLLER GRILL: Pre-heat roller grill on medium for 15-20 minutes to ensure proper cooking temperature. Cook hot dogs until an internal temperature of 140F is reached.

#### Handling and Storage Instructions

Information currently unavailable.

#### Ingredients

Beef, water, dextrose, contains 2% or less of sea salt, potassium lactate, flavorings, sodium diacetate, sodium erythorbate, paprika, extractives of paprika, sodium nitrite

Allergen	Yes	No	Unavailable
Milk			✓
Eggs			✓
Fish			✓
Nuts			✓
Peanuts			✓
Soy			✓
Wheat			✓
Tree Nuts			✓
Crustacean			✓

#### Nutrition Facts

Serving Size (Cal) 80

Serving Per Container N/A

Amount Per Serving

**Calories 170**                      Calories from Fat 117

% Daily Value\*

**Total Fat 15**                      23%

**Saturated Fat(g) 6**                30%

**Trans Fat(g) N/A**

**Cholesterol(mg) 35**              12%

**Sodium(mg) 360**                15%

**Total Carbohydrate(g) 2**        1%

**Dietary Fiber(g) N/A**            N/A%

**Sugars(g) 1**

**Protein(g) 7**

Vitamin A N/A% Vitamin C N/A%

Calcium N/A% Iron N/A%

#### Shipping and Packing

##### Information:

**Gross weight:** 10.45

**Net weight:** 10

**Catch weight:** N/A

**Length:** 12.75

**Width:** 9.38

**Height:** 4.63

**Cube:** 0.32

#### Supplemental Information

Information currently unavailable.

##### Child Nutrition

Information currently unavailable.

#### Nutritional Disclaimer

Upper Lakes Foods obtains nutritional information from claims made by the product manufacturer(s). Although we have made every effort to be as accurate as possible, manufacturers frequently change formulations and it may take some time to get our records updated to reflect these changes. We suggest you continue to read product labels as we cannot guarantee the information posted here is 100% accurate and current and as such cannot be responsible for individual reactions to any product listed here. In addition, any product images displayed are for reference only and may not reflect the most current packaging.

When precise nutritional information is important, our data is not a substitute for reading the label on the products you purchase or for contacting the manufacturer directly for additional details.

The product data on this report was provided by GS1 and/or the product's manufacturer, who are solely responsible for its content.

All product information contained herein is subject to change, including nutritional information. Please contact your sales representative for current information at time of purchase.

**Date: Mon Sep 28 2020**

*FPR Recipe # 44618*

## Whole Grain Rich Mac & Cheese (straight noodle)

**JTM Item** 5769  
**Number:**

### Product Title:

MACARONI & CHEESE

Meets Child Nutrition Program Requirements for Grains in School Meals

<b>Nutritional Information:</b>	<b>CN Serving Size</b>	<b>100g Serving</b>
Serving Size (oz.)	6.00	3.53
Serving Size (g)	170.1	100.0
Servings Per Case	80	136
Calories	295	173
Calories from Fat	132	78
Protein (g)	16	9
Carbohydrates (g)	26	15
Fiber (g)	2	1
Total Fat (g)	15	9
Saturated Fat (g)	8.1	4.7
Trans Fat (g)*	0.0	0.0
Cholesterol (mg)	47	27
Sodium (mg)	759	446
Sugar (g)	3	2
Vitamin A (IU)	654	384
Vitamin C (mg)	0	0
Calcium (mg)	363	214
Iron (mg)	1	1

### Ingredients:

WATER, PASTEURIZED PROCESS CHEESE (cheddar cheese [pasteurized milk, cheese culture, salt, enzymes], water, cream, sodium phosphates and potassium phosphates, seasoning [potassium chloride, flavor (contains maltodextrin)], salt, paprika extract, annatto extract), MACARONI (whole durum wheat flour, semolina, egg white, niacin, ferrous sulfate, thiamine mononitrate, riboflavin, folic acid), CONTAINS LESS THAN 2% OF NONFAT DRY MILK, CHEESE FLAVOR (a dehydrated blend of whey, cheddar cheese [milk, cheese culture, salt, enzymes], butter, buttermilk solids, sodium phosphate, natural flavor), MODIFIED FOOD STARCH, BUTTER FLAVORING (whey solids, enzyme-modified butter [butter, buttermilk powder, enzymes], maltodextrin, salt, dehydrated butter [butter, buttermilk powder], guar gum, annatto and turmeric [for color]), SODIUM PHOSPHATES AND POTASSIUM PHOSPHATES.

**CN Statement:** **CN ID Number: 093197**

This 30 lb case provides 80 servings 6.00 oz each. Each 6.00 oz serving (by weight) of Macaroni and Cheese provides 2.00 oz equivalent meat alternate and 1.00 oz equivalent grains for Child Nutrition Meal Pattern Requirements. (Use of this logo and statement authorized by the Food and Nutrition Service, USDA 07-15).

### Product Specifications:

UPC (GTIN)	00049485057697
Case Pack	30# 6 Bags
Net Weight	30.000 lbs
Gross Weight	31.300 lbs
Case Length	15.440 in
Case Width	11.810 in
Case Height	6.880 in
Case Cube	0.730 ft
TixHi	10x7
Shelf Life	548 Days

\*Contains 0 grams artificial trans fat

### Allergens:

Milk, Egg, Wheat

### Preparation:

KEEP FROZEN Place sealed bag in a steamer or in boiling water. Heat Approximately 45 minutes or until product reaches serving temperature. CAUTION: Open bag carefully to avoid being burned.

August 02, 2017

# FPR Recipe # 5005



## Pillsbury® Mini Pancakes, Maple Burst'n

**Image  
Unavailable**



### NUTRITION

#### Nutrition Facts

Serving Size: 1 Package (89g)

Amount Per Serving

As Packaged

Calories 220

Calories From Fat 60

% Daily Value %

Total Fat 6g 9%

Saturated Fat 0.5g 3%

Trans Fat 0g

Cholesterol 0mg 0%

Sodium 130mg 5%

Total Carbohydrate 39g 13%

Dietary Fiber 3g 12%

Sugars 12g

Protein 4g

Vitamin A 0%

Vitamin C 0%

Calcium 2%

Iron 4%

\* Percent Daily Value (DV) are based on a 2,000 calorie diet

\* - Not a significant nutrient source

### PACKAGING

Base Product Code: 137732000	Unit Weight: 3.17 OZ
GTIN: 10018000377326	Gross Case Weight: 18.40 LB
Units Per Case: 72	Net Case Weight: 14.2650 LB
Pallet Info: Layer: 8, High: 7, Pal Qty: 56	Case Dimensions (in): 19.62 (L) X 11.75 (W) X 11 (H)
Total Shelf Life: 186 DY	Kosher: NONE: NONE

### INGREDIENTS

Water, Whole Wheat Flour, Sugar, Brown Rice Flour, Canola Oil. Contains less than 2% of: Fructose, Glycerin, Leavening (potassium bicarbonate, sodium aluminum phosphate, baking soda, monocalcium phosphate), Maltodextrin, Egg White, Salt, Hydrogenated Cottonseed Oil, Cellulose Gum, Natural Flavor, Butter Acids. Allergens: CONTAINS WHEAT, EGG AND MILK INGREDIENTS.

### UPC BARCODE

**No Barcode Available**





# Pancakes, WG, WholesomeChoice, Buttermilk, MapleCinn, 2 Pack

[#1478]

FRR Recipe # 5005



Can every morning be a pancake morning? We'd like to think so! These fluffy maple cinnamon pancakes are great plain or served with syrup and fruit toppings.

## General Specifications

Pack: 72/2.6 oz

Kosher: No

Shelf Life: 2 hours at ambient. 3 days refrigerated.  
365 days frozen.

Status: Available



## SCHOOL SPECIFICATIONS

USDA Smart Snack: Yes

Nutritional Ratio: 16-3-16

OZ Grain Equivalents: 2.0

Whole Grain: 13.65g, 51%

Enriched Flour: 13.27g

Combined Flour 26.91g

## INGREDIENTS

Water, Whole Wheat Flour, Enriched Unbleached Flour (Wheat Flour, Malted Barley Flour, Niacin, Reduced Iron, Thiamine Mononitrate, Riboflavin, Folic Acid), Sugar, Maple Chips (Sugar, Wheat Flour, Soybean Oil, Cellulose Gum, Natural Flavor), Eggs, Buttermilk Solids, Dextrose, Soybean Oil, Whey Powder, Natural Maple Flavor (Water, Propylene Glycol), Baking Powder (Sodium Bicarbonate, Sodium Aluminum Sulfate, Monocalcium Phosphate), Lecithin, Cinnamon, Salt.

## ALLERGENS

Contains egg, milk, soy, and wheat ingredients. This product is produced in a nut-free facility.

## Instructions

### PREPARATION

The day before serving: Remove product in full cases from the freezer and thaw for 2 hours at room temperature. After thawing, put in the refrigerator/cooler until needed. DO NOT RE-FREEZE! Re-freezing

## Nutrition Facts

Serving size 2 Pancakes (74g)

Amount per serving

**Calories 170**

% Daily Value\*

Total Fat 3g 4%

Saturated Fat 0.5g 3%

Trans Fat 0g

Cholesterol 10mg 3%

Sodium 200mg 8%

Total Carbohydrate 37g 13%

Dietary Fiber 0g 0%

Sugars 12g

Includes 4g Added Sugars 8%

Protein 4g

Vitamin D 0mcg 0%

Calcium 70mg 6%

Iron 1.3mg 8%

Potassium 70mg 2%

\* The % Daily Value (DV) tells you how much a nutrient in a serving of food contributes to a daily diet. 2,000 calories a day is used for general nutrition advice.





FR Rec # 5980

**PRODUCT DESCRIPTION:**

BIG DADDY'S® Primo Four Cheese Pizza combines mozzarella, Provolone, Cheddar and Parmesan for a unique, on-trend variety students will love! The Parmesan, breadcrumb and herb coating on the outside of the crust adds crunch and great flavor.

- Great flavor provides an easy transition to whole grain pizza.
- Unique crust topping provides crunch and flavor to the crust.
- Offer new, on-trend pizza to keep the menu exciting!
- Multi-cheese blend adds additional flavor.
- Pre-sliced into 8 equal servings.

**MENU APPLICATIONS:**

- Serve with fruit and milk for a complete meal.

**CHILD NUTRITION INFORMATION:**

**095228** -Each 5.18 oz. portion of Cheese Pizza provides 2.00 oz. equivalent meat alternate, 2.00 oz. equivalent grains, and 1/8 cup red/orange vegetable for the Child Nutrition Meal Pattern Requirements. (Use of this logo and statement authorized by the Food and Nutrition Service, USDA 12-16.)

**HARD BID SPECIFICATIONS:**

BIG DADDY'S™ Primo 16" WG Pre-Sliced Rising Crust Four Cheese Pizza - 8-Cut must provide 2.00 oz. equivalent meat/meat alternate, 2.00 oz. of equivalent grains, 1/8 cups red/orange vegetables. Portion to provide a minimum of 330 calories with no more than 18 fat grams. Must contain a minimum of 2 grams of fiber and less than 590 of sodium. Case pack of 72 per case.

**CN Label required. Acceptable Brand: BIG DADDY'S™ 78653**

**PREP INSTRUCTIONS:**

COOK BEFORE EATING. Best if cooked from Frozen state, PREHEAT OVEN. FOR FOOD SAFETY AND QUALITY COOK BEFORE EATING TO AN INTERNAL TEMPERATURE OF 160°F. CONVECTION OVEN: Place 1.5 pizza on a tray. Bake at 350°F for 14-17 minutes, High Fan, Rotate product halfway thru bake cycle. IMPINGEMENT OVEN: Load 1 whole pre-sliced pizza. Bake at 420°F for 6-8 minutes. CONVENTIONAL OVEN: SINGLE SLICE 1. Preheat oven to 400°F. 2. Separate one slice from frozen pizza and place on baking sheet or pizza pan. 3. Bake for 14 to 16 minutes. Whole Pizza 1. Remove frozen pizza from overwrap and place on lightly oiled aluminum foil. 2. Place pizza and foil on middle oven rack. 3. Bake for 30 to 32 minutes. Pizza is done when all cheese is melted. NOTE: Due to variances in oven regulators, cooking time and temperature may require adjustments. Pizza is done when cheese begins to brown and is completely melted in the middle. Refrigerate or discard any unused portion.

**INGREDIENTS:**

INGREDIENTS: CRUST: WHOLE GRAIN BLEND (WHITE WHOLE WHEAT FLOUR, WHOLE GRAIN YELLOW CORN FLOUR, BROWN RICE FLOUR, WHOLE GRAIN OAT FLOUR), NONFAT MILK, ENRICHED FLOUR (WHEAT FLOUR, MALTED BARLEY FLOUR, NIACIN, REDUCED IRON, THIAMINE MONONITRATE, RIBOFLAVIN, FOLIC ACID), WATER, YEAST, VEGETABLE OIL (SOYBEAN AND/OR CANOLA OIL), SUGAR, WHEAT GLUTEN, CONTAINS 2% OR LESS OF: HYDROGENATED SOYBEAN OIL, PARMESAN CHEESE (CULTURED PASTEURIZED PART SKIM MILK, SALT, ENZYMES), SEA SALT, DEXTROSE, GUAR GUM, SPICE, SALT, SOY LECITHIN, NATURAL FLAVOR, ASCORBIC ACID, WHEAT STARCH, ENZYMES. TOPPINGS: LOW MOISTURE PART SKIM MOZZARELLA AND PARMESAN CHEESES (CULTURED PASTEURIZED PART SKIM MILK, SALT, ENZYMES), LITE MOZZARELLA CHEESE (SKIM MILK, CHEESE CULTURES, SALT, MODIFIED FOOD STARCH\*, ENZYMES, VITAMIN A PALMITATE)\*INGREDIENTS NOT IN REGULAR MOZZARELLA CHEESE, PROVOLONE AND WHITE CHEDDAR CHEESES (CULTURED PASTEURIZED MILK, SALT, ENZYMES), SPICE. SAUCE: TOMATOES (WATER, TOMATO PASTE [NOT LESS THAN 28% SOLUBLE SOLIDS]), CONTAINS 2% OR LESS OF: MODIFIED FOOD STARCH, PARMESAN CHEESE (CULTURED PASTEURIZED PART SKIM MILK, SALT, ENZYMES), SUGAR, DEXTROSE, SALT, DRIED GARLIC, SPICE, DRIED ONION, DEHYDRATED ROMANO CHEESE (CULTURED PASTEURIZED SHEEP'S AND COW'S MILK, SALT, ENZYMES), PAPRIKA, CITRIC ACID.

Cooking Method	Temp	Time	Instructions
Convection Oven	350 °F	14-17 MINUTES	Prepare from frozen state
Impingement Oven	420 °F	6-8 MINUTES	Prepare from frozen state
Conventional Oven	400 °F	14 - 16 MINUTES	Prepare from frozen state
Conventional Oven	400 °F	30 - 32 MINUTES	Prepare from frozen state

**SHIPPING INFO / SHELF LIFE:****SHIPPING INFO:**

<b>GTIN (Case):</b>	10072180786538
<b>Gross Weight:</b>	26.95
<b>Net Weight:</b>	23.344
<b>Each Weight:</b>	5.18
<b>Cube:</b>	1.82
<b>Dimensions (LxWxH):</b>	16.81 x 16.81 x 11.13
<b>Cases/Pallet:</b>	48

**ALLERGENS:**

Contains  
Milk or its Derivatives, Wheat or its  
Derivatives, and Soy or its Derivatives.



*Karen Wilder*

Karen Wilder, RD, MPH, LD  
Sr Director, Scientific & Regulatory Affairs

FPR Rec. # 5743


**Pack Size**  
96/4.83OZ

**Vendor**  
CONAGRA  
FROZEN  
FOOD

**Brand**  
THE MAX

**MPC Code**  
7738712699

**GTIN#**  
20077387126993
**Product Description**

PIZZA CHEESE QUESADILLA WG

**Preparation & Cooking Instructions**

Note: Ovens will vary so please adjust time and temperature accordingly. Refrigerate or discard any unused portion. Convection oven: Bake at 375F. Bake on parchment lined pan 15 to 19 minutes or until internal temperature reaches a minimum of 165F. Conventional oven: Bake at 400F. Bake on parchment lined pan 19 to 23 minutes or until internal temperature reaches a minimum of 165F.

**Handling and Storage Instructions**

Information currently unavailable.

**Ingredients**

Water, Mozzarella Cheese (Pasteurized Part Skim Milk, Cheese Cultures, Salt, Enzymes), Whole Wheat Flour, Enriched Wheat Flour (Bleached Wheat Flour, Malted Barley Flour, Niacin, Reduced Iron, Thiamine Mononitrate, Riboflavin, Folic Acid), Tomato Paste (Not less than 31% NTSS), Soybean Oil, Soy Flour, Casein, Contains 2% or less of: Milk Protein Concentrate, Modified Corn Starch, Salsa Seasoning (Salt, Sugar, Dehydrated Onion and Garlic, Dehydrated Jalapeno Pepper, Citric Acid, Xanthan Gum, Spice, Dehydrated Cilantro, Potassium Sorbate), Salt, Modified Potato Starch, Baking Powder (Sodium Bicarbonate, Sodium Aluminum Sulfate, Cornstarch, Monocalcium Phosphate, Calcium Sulfate), Dextrose, Sodium Aluminum Phosphate, Dough Conditioner (Wheat Flour, Salt, Soy Oil, L-Cysteine, Ascorbic Acid, Enzymes), Vinegar, Wheat Gluten, Cheddar Cheese Flavor (Cheddar, Blue And Semi-Soft Cheese [Pasteurized Milk, Cheese Cultures, Salt, Enzymes], Water, Whey, Salt, Citric Acid), Disodium Phosphate, Mozzarella Cheese Type Flavor (Cheese [Milk, Culture, Rennet, Salt], Milk Solids, Disodium Phosphate), Lactic Acid, Sorbic Acid (Preservative), Paprika Annatto Blend (Natural Extractives Of Annatto Seeds And Paprika With Mono-, Di-, And Triglycerides, Soybean and/or Canola Oil, Other Natural Flavors, Tocopherol And Potassium Hydroxide), Nutrient Blend (Magnesium Oxide, Zinc Oxide, Calcium Pantothenate, Riboflavin And Vitamin B-12), Vitamin A Palmitate. CONTAINS: MILK, SOY, WHEAT.

Allergen	Yes	No	Unavailable
Milk	✓		
Eggs			✓
Fish			✓
Nuts			✓
Peanuts			✓
Soy	✓		
Wheat	✓		
Tree Nuts			✓
Crustacean			✓

**Nutrition Facts**

Serving Size (Cal) 96

Serving Per Container N/A

Amount Per Serving

**Calories 330**

Calories from Fat N/A

% Daily Value\*

**Total Fat 12**

N/A%

**Saturated Fat(g) 3.5**

N/A%

**Trans Fat(g) N/A****Cholesterol(mg) 10**

N/A%

**Sodium(mg) 830**

N/A%

**Total Carbohydrate(g) 40**

N/A%

**Dietary Fiber(g) 4**

N/A%

**Sugars(g) 3****Protein(g) 16**

Vitamin A N/A% Vitamin C N/A%

Calcium N/A% Iron N/A%

**Shipping and Packing****Information:****Gross weight:** 31.73**Net weight:** 28.99**Catch weight:** N/A**Length:** 18.13**Width:** 14.75**Height:** 10.38**Cube:** 1.61**Supplemental Information**

Information currently unavailable.

**Child Nutrition**

Information currently unavailable.

**PRODUCT DESCRIPTION:**

Loaded with cheese and sauce and formed into triangles for easy handling, they go perfect with salsa or dipping sauces.

- Filled with 100% mozzarella cheese and a zesty southwest style sauce.
- Pre-scored to easily break apart into triangle-shaped pockets.
- 51% whole grain crust.

**MENU APPLICATIONS:**

- Serve with fruit and milk for a complete meal.

**CHILD NUTRITION INFORMATION:**

**090318** -Divide each 35.20 oz. sheet into 16 - 2.20 oz. portions. Two 2.20 oz. Quesadillas (4.40 oz. total) (by weight) provide 2.00 oz. equivalent meat alternate and 2.00 oz. equivalent grains for the Child Nutrition Meal Pattern Requirements. (Use of this logo and statement authorized by the Food and Nutrition Service, USDA 04-14.)

**HARD BID SPECIFICATIONS:**

COYOTE GRILL® 51% WG Cheese Quesadilla must provide 2.00 oz. equivalent meat/meat alternate, 2.00 oz. of equivalent grains, Portion to provide a minimum of 290 calories with no more than 14 fat grams. Must contain a minimum of 2 grams of fiber and less than 660 of sodium. Case pack of 96 per case.

**CN Label required. Acceptable Brand: COYOTE GRILL® 78372**

**PREP INSTRUCTIONS:**

COOKING GUIDELINES: Cook before eating. FOR FOOD SAFETY AND QUALITY COOK BEFORE EATING TO AN INTERNAL TEMPERATURE OF 165°F, Place 1 frozen sheet (8 servings) into prepared pan. Preheat oven. CONVECTION OVEN: 375°F, 11-13. CONVENTIONAL OVEN: 450°F, 14-15 minutes. NOTE: Due to variances in oven regulators, cooking time and temperature may require adjustments. Refrigerate or discard any unused portion.

Cooking Method	Temp	Time	Instructions
Convection Oven	375 °F	11-13 MINUTES	Cook before serving
Conventional Oven	450 °F	14-15 MINUTES	

**SHIPPING INFO / SHELF LIFE:****SHIPPING INFO:**

<b>GTIN (Case):</b>	10072180783728
<b>Gross Weight:</b>	28.06
<b>Net Weight:</b>	26.40
<b>Each Weight:</b>	4.40
<b>Cube:</b>	1.12
<b>Dimensions (LxWxH):</b>	16.63 x 11.63 x 10
<b>Cases/Pallet:</b>	45
<b>Tie:</b>	9
<b>High:</b>	5
<b>SHELF LIFE:</b>	365

**ALLERGENS:**

Contains  
Milk or its Derivatives, Eggs or its  
Derivatives, Wheat or its Derivatives, and  
Soy or its Derivatives.

**INGREDIENTS:**

INGREDIENTS: CRUST: FLOUR BLEND (WHITE WHOLE WHEAT FLOUR, ENRICHED FLOUR [WHEAT FLOUR, MALTED BARLEY FLOUR, NIACIN, REDUCED IRON, THIAMINE MONONITRATE, RIBOFLAVIN, FOLIC ACID]), WATER, ISOLATED SOY PROTEIN, VEGETABLE OIL (SOYBEAN, COTTONSEED, CORN, AND/OR CANOLA OIL), CONTAINS 2% OR LESS OF: WHEAT GLUTEN, POTATOES, DRIED WHOLE EGG, SALT, BAKING POWDER (SODIUM ACID PYROPHOSPHATE, SODIUM BICARBONATE), GARLIC POWDER, MODIFIED FOOD STARCH; FILLING: LOW MOISTURE PART SKIM MOZZARELLA CHEESE (CULTURED PASTEURIZED PART SKIM MILK, SALT, ENZYMES), WATER, TOMATO PASTE [NOT LESS THAN 28% SOLUBLE SOLIDS], CONTAINS 2% OR LESS OF: MODIFIED FOOD STARCH, DRIED WHOLE EGG, MALTODEXTRIN, WHEY PROTEIN CONCENTRATE, SPICE, SUGAR, ONION POWDER, SALT, CITRIC ACID, NATURAL FLAVORING (POTASSIUM CHLORIDE, MALTODEXTRIN, AUTOLYZED YEAST EXTRACT, MODIFIED FOOD STARCH, WATER, YEAST EXTRACT, DEXTROSE, NATURAL FLAVOR), GARLIC POWDER; BAKE SHEEN (WATER, MODIFIED FOOD STARCH, CITRIC ACID, POTASSIUM SORBATE, SODIUM BENZOATE, XANTHAN GUM, AND PROPYLENE GLYCOL ALGINATE).



*Karen Wilder*

Karen Wilder, RD, MPH, LD  
Sr Director, Scientific & Regulatory Affairs



# Sandwich, Maple Waffle, WG, Chicken Sausage, IW (#6657)



It doesn't get much more delicious than our chicken sausage and maple waffle sandwich! The combination of flavors, along with the convenience of an oven-safe package make this the perfect breakfast choice!

## General Specifications

Pack: 126/2.5 oz

Kosher: No

Shelf Life: 2 hours at ambient. 6 days refrigerated.

365 days frozen.

Status: Available



## Nutrition Facts

Serving size 1 Sandwich (71g)

Amount per serving

**Calories 170**

	% Daily Value*
Total Fat 8g	10%
Saturated Fat 1.5g	8%
Trans Fat 0g	
Cholesterol 40mg	13%
Sodium 280mg	10%
Total Carbohydrate 15g	6%
Dietary Fiber 1g	4%
Sugars 5g	
Includes 4g Added Sugars	8%
Protein 8g	

Vitamin D 0.2mcg	0%
Calcium 20mg	2%
Iron 0.7mg	4%
Potassium 50mg	2%

\* The % Daily Value (DV) tells you how much a nutrient in a serving of food contributes to a daily diet. 2,000 calories a day is used for general nutrition advice.

## SCHOOL SPECIFICATIONS

Nutritional Ratio: 42-8-7

Protein Equivalents: 1.0

OZ Grain Equivalents: 1.0

Whole Grain: 9.99g, 52%

Enriched Flour: 9.05g

Combined Flour 19.03g

## INGREDIENTS

Waffle: Water, Whole Wheat Flour, Enriched Wheat Flour (Wheat Flour, Niacin, Reduced Iron, Thiamine Mononitrate, Riboflavin, Folic Acid), Soybean Oil, Lecithin, Maple Chips (Sugar, Wheat Flour, Soybean Oil, Cellulose Gum, Natural Flavor), Brown Sugar, Milk Solids, Egg, Natural Maple Flavor (Water, Propylene Glycol, Natural Flavors), Baking Soda, Salt. Chicken Sausage: Chicken, Water, Seasoning (Salt, Spices, Dextrose, Sugar).

## ALLERGENS

Contains egg, milk, soy, and wheat ingredients. This product is produced in a nut-free facility.

## Instructions

## PREPARATION

From frozen - Product is in ovenable film. It is not necessary to remove from film before heating. Heat product at 350 degrees F for 20-22 minutes.

ALBIE'S FOOD PRODUCTS, LLC  
NUTRITIONAL PANEL & INGREDIENT LIST

**WHOLE GRAIN WOWBUTTER & GRAPE JELLY**

40-4.6 oz. Individually Wrapped Sandwiches

Product Code #608

## Nutrition Facts

40 servings per container

**Serving size** 4.6 oz (130g)

**Amount per serving**

**Calories** **540**

% Daily Value\*

**Total Fat** 29g 37%

Saturated Fat 6g 30%

Trans Fat 0g

**Cholesterol** 0mg 0%

**Sodium** 390mg 17%

**Total Carbohydrate** 53g 19%

Dietary Fiber 8g 29%

Total Sugars 19g

Includes 16g Added Sugars 32%

**Protein** 18g

Vitamin D 1mcg 6%

Calcium 242mg 20%

Iron 4mg 20%

Potassium 699mg 15%

\*The % Daily Value tells you how much a nutrient in a serving of food contributes to a daily diet. 2,000 calories a day is used for general nutrition advice.



**SIMPLY THAW AND SERVE**

**C.N. EQUIVALENTS – 2 MMA/2 GRAINS or ½ C VEGETABLES (Legume)/2 GRAINS**

**Shelf Life:** 12 months frozen. For best results use within 48 hours after thawing.

**TI/HI:** 8/10

**INGREDIENTS: BREAD:** Whole Grain Wheat Flour, Water, Enriched Flour [Unbleached Wheat Flour, Malted Barley Flour, Reduced Iron, Thiamine Hydrochloride (Vitamin B1), Riboflavin (Vitamin B2), Niacin (Vitamin B3), Folic Acid], Sugar, Wheat Gluten, Resistant Corn Starch, Soybean Oil, Salt, Yeast, Monoglycerides, Modified Whey, Calcium Propionate (A Preservative), Butter Flavor, Citric Acid, Calcium Sulfate, Vitamin D2 (Ergocalciferol), Ascorbic Acid. **JELLY:** White Sugar, Grape Juice (Made From Concentrate), Pectin, Citric Acid, Potassium Sorbate. **WOWBUTTER:** Whole Toasted Soy, Pressed Soy Oil, Cane Sugar, Palm Oil (Sustainable), Sea Salt. **CONTAINS: WHEAT, SOY AND MILK PRODUCTS.**

Albie's WOWButter & Jelly Sandwich is made with at least 51% whole grain wheat flour.

*Keven Clawson*





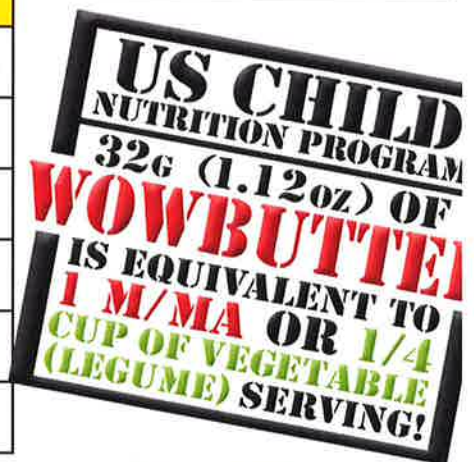
FPR Rec #5893



Nutrition Facts	
16 servings per container	
Serving size	2 Tbsp (32g)
Amount per serving	
<b>Calories</b>	<b>200</b>
% Daily Value*	
<b>Total Fat</b> 15g	<b>19%</b>
Saturated Fat 3g	<b>15%</b>
Trans Fat 0g	
<b>Cholesterol</b> 0mg	<b>0%</b>
<b>Sodium</b> 100mg	<b>4%</b>
<b>Total Carbohydrate</b> 8g	<b>3%</b>
Dietary Fiber 2g	<b>7%</b>
Total Sugars 4g	
Includes 2g of Added Sugars	<b>4%</b>
<b>Protein</b> 7g	
Vitamin D 0mcg	0%
Calcium 30mg	2%
Iron 1mg	6%
Potassium 300mg	8%

\* The % Daily Value (DV) tells you how much a nutrient in a serving of food contributes to a daily diet. 2,000 calories a day is used for general nutrition advice.

Description	Size	Item Case UPC	Mfg Code	DOT Item#
Creamy	200 x 0.56oz Cup	10773948109100	10910	0616796
Creamy	100 x 1.12oz Cup	10773948109209	10920	0616797
Creamy	6 x 1.1 lb Jar	20773948201009	20100	0616800
Crunchy	6 x 1.1 lb Jar	20773948201016	20101	0616801
Creamy	2 x 4.4 lb Jar	20773948401003	40100	0616802
Creamy	1 x 22 lb Pail	10773948707702	70770	0616803



## Ingredient List:

Whole Toasted Soy, Pressed Soy Oil, Cane Sugar, Palm Oil (Sustainable), Sea Salt

All Ingredients are from NON-GMO sources



0.56 oz



1.12 oz



1.1lb



4.4lb



22 lb